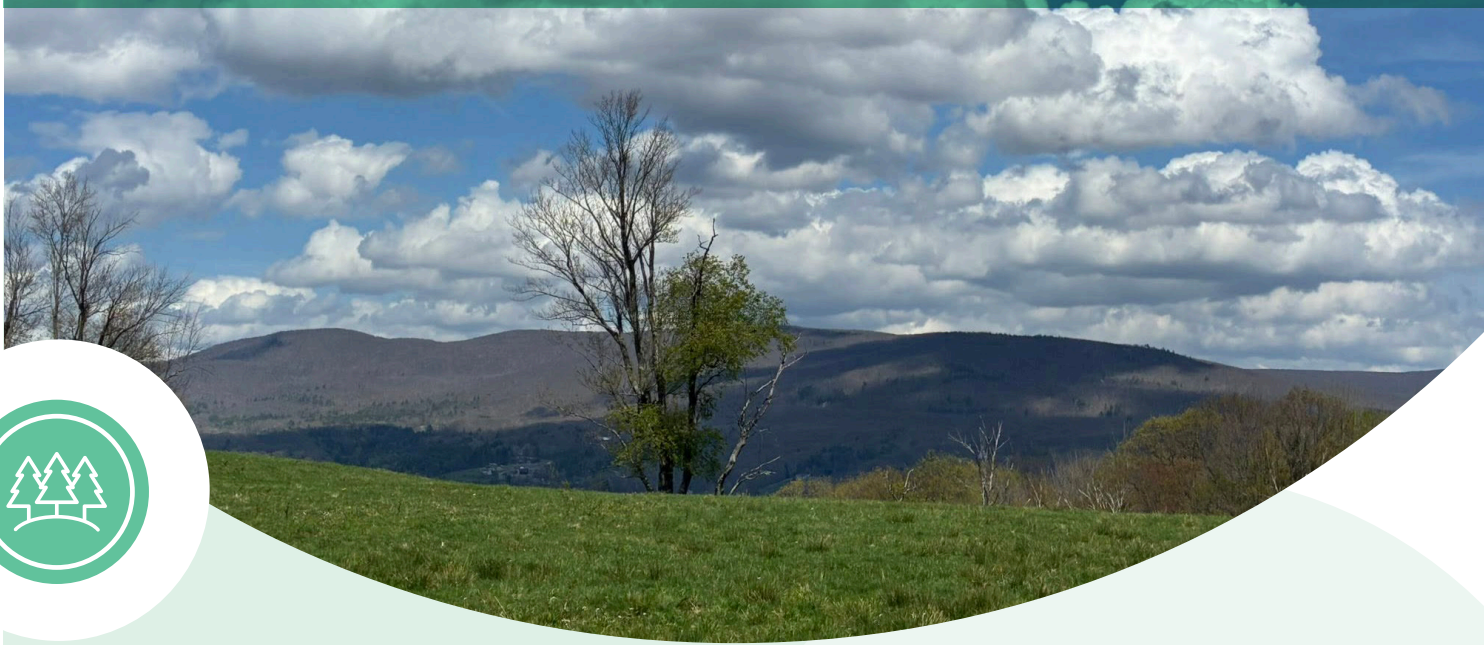


Walking in Massachusetts



The Clark Campus Trails Williamstown, MA

Special tips for this location:

Free parking is available at the Clark Center (it can be busy at times, so plan accordingly). During open hours, restrooms are available at the Clark Center, Manton Research Center, and Lunder Center.

Highlights: This walk offers a beautiful view of Western Massachusetts with scattered sculptures featured throughout!

Hike idea: Park at the Clark Center parking and walk to the kiosk. Walk up the steep Pasture Trail and take in the beautiful views. Stay toward the right to Stone Bench Trail and go through the gate. Take a left at Hopkins-Gale Trail to Woodland Trail. Take a left onto Nan's Path, a left to Meadow Walk and a right back on Pasture Trail to your car. If you want more of an adventure after that, wander around the beautiful campus and consider a visit to the [museum](#).

Leash up your dog.

*“Those who contemplate the
beauty of the earth find reserves
of strength that will endure as
long as life lasts”*

— Rachel Carson

See [The Clark Campus](#) for more information
and to [view a map](#).

For other walk suggestions, check out the
[Walking in Massachusetts site!](#)

08/25